

# Annual Report

Fiscal Year 2013  
July 1, 2012—June 30, 2013



DuPage  
**Habitat**  
for Humanity®

*Building Homes, Community  
and Hope*

Since 1995



SHOWN: Prairie Green, Habitat's 12 townhouse neighborhood in Glen Ellyn.

# A Message from our Board President & Executive Director

Greetings Friends & Supporters,

We are pleased to present this report on the condition and accomplishments of DuPage Habitat for Humanity for the 2013 fiscal year. There are a number of highlights that occurred this year:

- We completed the Pioneer Prairie Project closing on the 11<sup>th</sup> home of that development.
- We finished phase 1 of Prairie Green, a 5 unit townhome building, and began phase 2.
- We set some new benchmarks in fundraising and volunteer engagement while serving families this year.
- Our ReStore set new records in sales and since opening reached the milestone of provided enough revenue to build a home for one of our partner families.
- We said good-bye to Sarah Brachle our Executive Director for the last 5 years and welcomed Dave Neary as our new Executive Director.

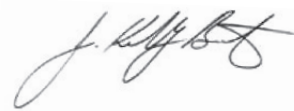
These are just a few of the many wonderful things that occurred in the DuPage Habitat world last year. Perhaps it was summed up best by a text sent by one of our partner families last Thanksgiving. It simply conveyed how grateful they were for the opportunity to spend the holiday together as a family in THEIR home. This occurred through the actions and caring of people, many of whom they never had the opportunity to thank personally. While what we have accomplished is always great to reflect on, we are especially excited of what the future holds. Since our inception in 1995, with your support, we have served 69 families. Over 50% of those served were in the last five years. While that is an impressive accomplishment, it doesn't begin to address the need for affordable housing in DuPage County. With that in mind we are finalizing a plan to serve over 70 families in the next 3 years, more than doubling what we have done to date! This is an aggressive undertaking that will be achieved through the Grace of God and with the support of caring individuals like you.

As we begin to plan for our 20<sup>th</sup> anniversary celebration in a little over a year and reflect on all of what we have achieved, we are truly grateful for many things. At the top of that list are the people and organizations who are willing to give their time and financial support-- enabling us to bring the dream of a simple, decent, affordable home to a deserving family. If you are on that list, THANK-YOU! If you would like to be on that list, we look forward to partnering with you in the future!

In Partnership:



David Neary  
Executive Director



J. Kelly Bufton  
President, Board of Directors

## Our Vision:

A world where everyone has a decent place to live.

## Our Mission Statement:

Seeking to put God's love into action, Habitat for Humanity brings people together to build homes, communities and hope.



## DuPage Habitat Board of Directors

**Kelly Bufton** (President)  
**Paula Brkich**  
**Edie Crews**  
**Richard Dickson** (Vice President)  
**Paul Garrett**  
**Anne Houghtaling**

**Paula Howard**  
**William P. McNeil**  
**Patricia Franson-Olinger**  
**Pete Papageorgakis** (Treasurer)  
**Ben Pohl**  
**Kathy Short** (Secretary)

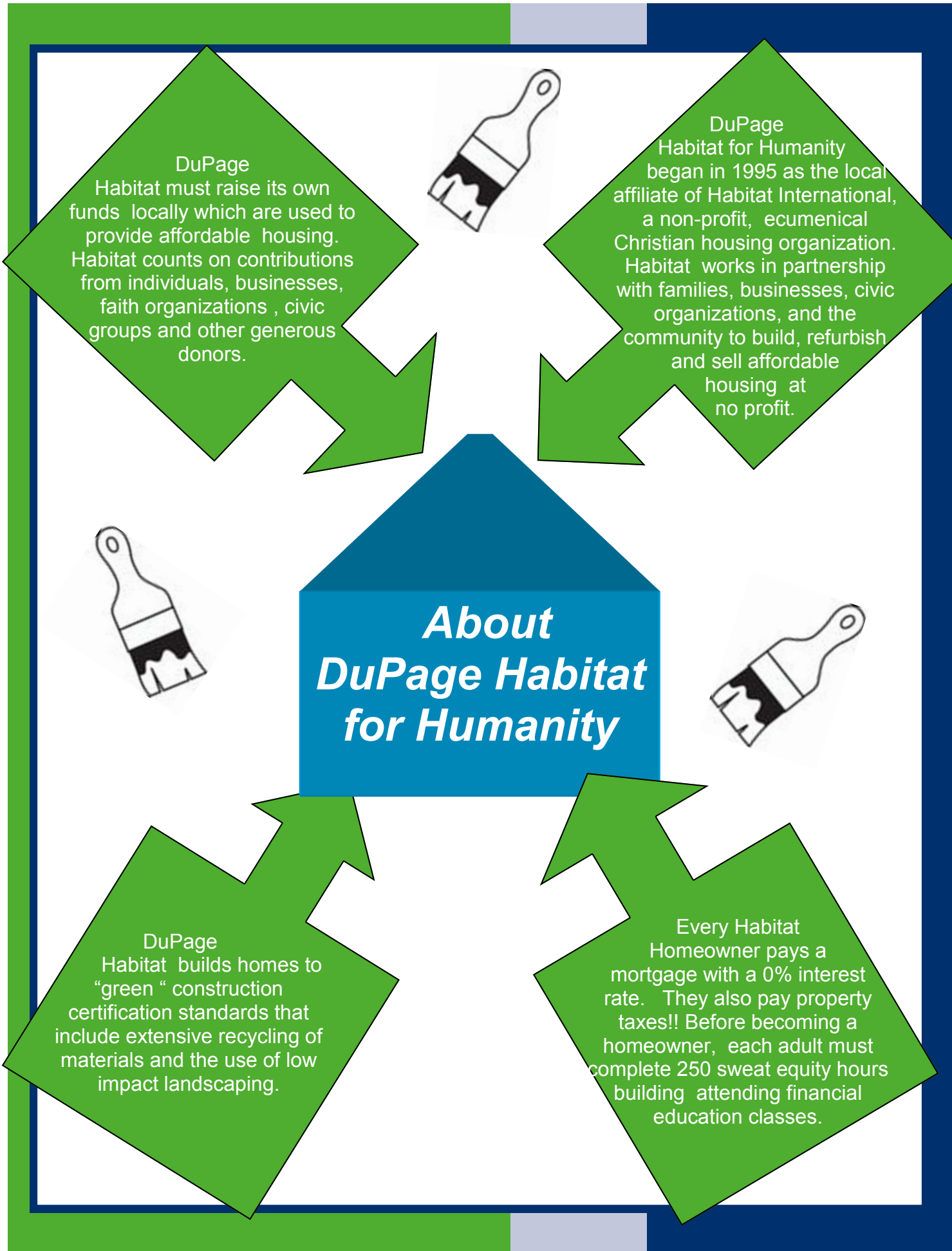
## DuPage Habitat Office Staff

**Executive Director:** Dave Neary  
**Business Manager:** Sarah Mae Tacker  
**Construction Manager:** Brian Harris  
**Director of Development:** Kaleshia Page  
**Director of Marketing and Events:** Mary Nurse  
**Family Services Coordinator:** Jennifer Taff  
**AmeriCorps Volunteer Coordinator:** Lauren Andres  
**House Leaders:** Mike McCormick and Aaron Wahlgren

## DuPage Habitat Restore Staff:

**ReStore Manager:** Jim Fessler  
**ReStore Assistant Manager:** Susan Boyd  
**ReStore Team Members:** Kerry Burrell  
Ernie Lakics  
Mike Sanders







# Volunteers



*...the heart of what we do!*

## Committee chairs

**Construction**



**Marty Dettmer  
Adam Allan**



**Family Selection**



**Sarah Hall  
Elaine Vernoia**



**Family Support**



**Debbie Yarnall  
Christa Szala-Sena**



**Special Events**



**Pat Green**

**Site Selection**



**Howard Peterson**

**Finance**



**Paul Jarosz**





## 2013 SUCCESSES

- ◆ DuPage Habitat completed and dedicated Phase 1 at Prairie Green, Habitat's 12 townhouse neighborhood in unincorporated Glen Ellyn.
- ◆ Now in its second year, ReStore has continued to support DuPage Habitat's mission.
- ◆ A new Executive Director has joined the DuPage Habitat team offering fresh ideas!
- ◆ DuPage Habitat completed and dedicated two new rehab projects!
- ◆ The 11th and final home in Pioneer Prairie was sold to a Partner Family.

## OUR FUTURE

- DuPage Habitat is scheduled to start and complete the accelerated construction of Phase 3 at Prairie Green.
- ◆ Seven rehab projects will be completed.
- ◆ Four "A Brush with Kindness" projects will help families stay in their homes.
- ◆ Habitat will continue to engage thousands of volunteers in a meaningful way.





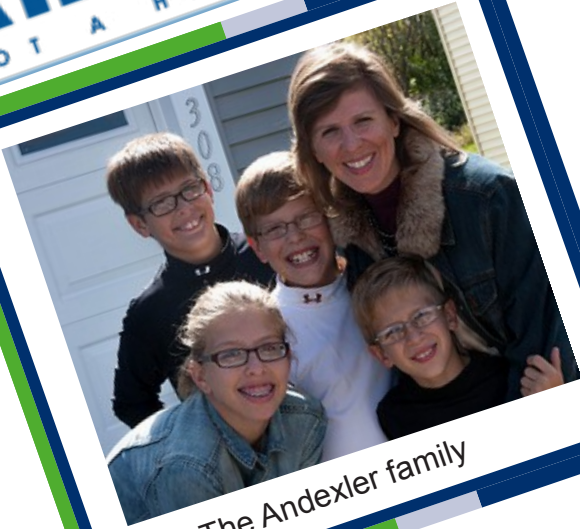
- ⇒ ReStore is DuPage County’s home for discount building materials.
- ⇒ All items at the ReStore are donated by companies & Individuals then sold to the general public at greatly reduced prices.
- ⇒ Proceeds from the ReStore go directly to fulfill the DuPage Habitat for Humanity’s mission to help build affordable housing for families in need.

A YEAR OF GROWTH & SUCCESS

- Sales grew by over 85% to over \$500,000 – over 300 tons of usable materials diverted from landfills this year, almost 500 tons to date.
- Hired 2 Part time employees.
- ReStore saw over 3,000 customers per month.
- Over 250 volunteer hours per week.
- Created Advisory Board with local business leaders.
- Hosted over 20 corporate/school volunteer groups.
- Participated in 6 community recycling events .
- Hosted Toy & Food Drive to benefit local charities.
- Started “What’s Your ReStory Contest” where Chicagoland ReStore shoppers created projects out of items found at the ReStore.



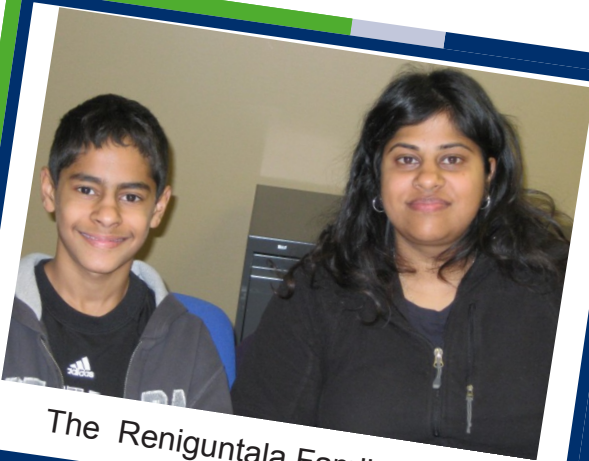
**A HAND UP**  
NOT A HANDOUT



The Andexler family



The Powdyei Family



The Reniguntala Family



The Adhikari Family



The Baklashev Family



# *Serving Families.....*

*It's what we do!*

DuPage Habitat serves families who live and work in the cities and villages of DuPage County. Habitat repairs and builds modest and affordable housing in partnership with the community and those in need of a decent place to live. In FY13, DuPage habitat place five new families in their homes.

**The Andexler Family** was the 60<sup>th</sup> Partner Family to own a home. They now live in our newest development in Glen Ellyn, Pioneer Prairie. Ann Marie works as a receptionist and support personnel. Originally Ann Marie heard about Habitat for Humanity through her parents, who were steadfast supporters of Habitat. Ann Marie believes that a home centrally located to work and school will make an immeasurable positive impact on her life and the lives of her children.

**The Baklashev Family.** Peter and Polina spent three and half years living with relatives because renting was too expensive for their family. Habitat made it possible for them to purchase a home where they now raise their children in a safe and secure environment.

**The Powdyeel Family** Ganesh and Niru came from the refugee camps of Napoli to the United States in order to obtain the American Dream. Habitat for Humanity has helped to fulfill part of their dream by offering affordable housing for both them and their family members.

**The Adhikari Family** was living in a 1 bedroom apartment with the their 18 month old baby at the time of application. The ceiling leaked, the apartment had roaches and bed bugs. Yadu and Tila being in the US just less than two years wanted more for their family. They were accepted into the program in December of 2011 and closed on their Habitat home in October of 2013.

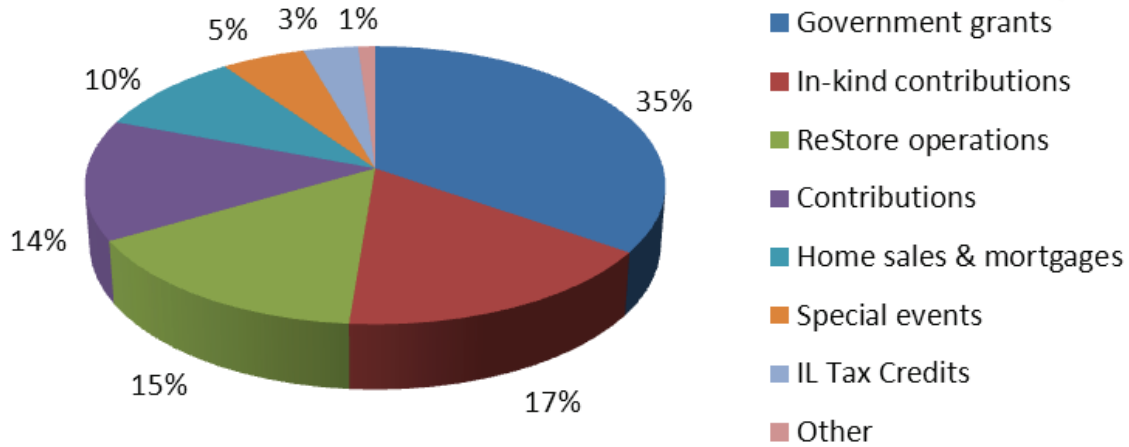
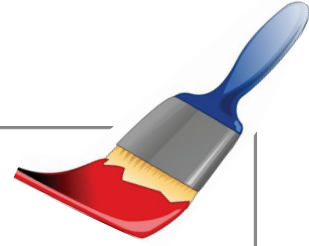
**The Reniguntala Family.** Kiran works as a one on one school nurse through Elmhurst Memorial Hospital, and at the time of application, she was a full time student. Currently divorced and raising her 12 year old son, Kiran needed to find affordable housing. Her current rent exceed 50% of her pay. Now as a proud homeowner she is able to provide decent affordable housing for her and her son.

In addition to building safe, affordable houses for local families, DuPage Habitat has a home repair program that helps people stay in their homes. These programs include:  
**A Brush With Kindness-** labor and exterior repairs are offered at low or no cost to homeowners.

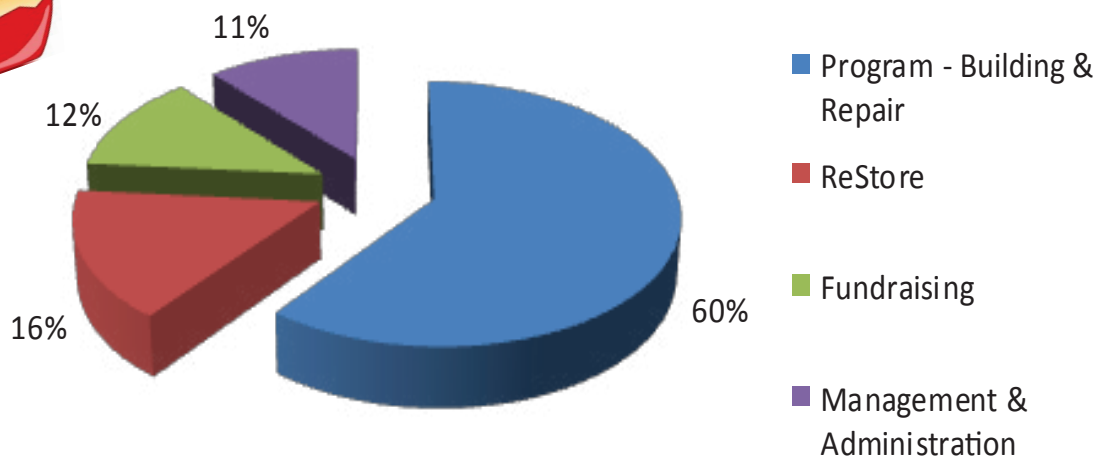
**Critical Home Repair-** includes both interior and exterior work to alleviate health and safety issues.



## Fiscal Year 2013 Income



## Fiscal Year 2013 Expense



## Statement of Financial Position

### Fiscal Year Ending June 30, 2013

	<b>Consolidated FY2013</b>
<b>ASSETS</b>	
Current Assets	
Cash and cash equivalents	471,066
Accounts receivable	28,828
Government grants receivable	47,892
Pledges receivable, current portion	173,288
Mortgage receivable, current portion	76,001
Inventories - land and construction in process	2,017,326
Inventory - ReStore	44,718
Pre-paid expenses	27,633
Deposits and other assets	66,543
Total Current Assets	<b>2,953,296</b>
Property and Equipment	
Office equipment and furniture	12,932
ReStore equipment	67,027
Software	57,840
	137,798
Less accumulated depreciation	(69,033)
Net property and equipment	<b>68,765</b>
Other Assets	
Investment in limited liability company	8,760
Mortgages receivable, net of present value discount and current portion	1,189,470
Pledges receivable, noncurrent portion	9,664
Total Other Assets	<b>1,207,894</b>
<b>TOTAL ASSETS</b>	<b>4,229,955</b>
<b>LIABILITIES &amp; EQUITY</b>	
Liabilities	
Current Liabilities	
Accounts Payable	208,350
Accrued Expenses	54,100
Deferred rent	17,562
Deferred income	16,620
Notes payable	181,822
Total Current Liabilities	<b>478,454</b>
Long Term Liabilities	
Notes payable, net of current portion	310,713
Total Long Term Liabilities	<b>310,713</b>
Total Liabilities	<b>789,167</b>
Equity	
Unrestricted Net Assets	1,702,596
Temporarily Restricted Net Assets	1,738,192
Total Net Assets	<b>3,440,788</b>
<b>TOTAL LIABILITIES &amp; EQUITY</b>	<b>4,229,955</b>

**Statement of Activities**  
Fiscal Year Ending June 30, 2013

	Temporarily		Total
	Unrestricted	Restricted	
	June 2013 YTD	June 2013 YTD	June 2013 YTD
<b>Public Support and Revenue</b>			
Federal and local government grants	-	1,149,218	1,149,218
Illinois affordable housing tax credits	113,475	-	113,475
Contributions	293,864	170,482	464,346
Home sales, net of present value discount	225,155	-	225,155
Home sales by homeowners	-	-	-
Mortgage loan discount amortization	90,855	-	90,855
ReStore operations	510,702	-	510,702
In-kind contributions and donated services	549,507	-	549,507
Special Events			
Contributions	106,929	-	106,929
Ticket sales	19,788	-	19,788
In-kind contributions and donated services	62,939	-	62,939
Less cost of direct benefits to donors	(15,478)	-	(15,478)
Net revenues from special events	174,178	-	174,178
Miscellaneous income	27,924	-	27,924
Equity in income of limited liability co.	8,760	-	8,760
Gain (loss) on sale of assets	(1,221)	-	(1,221)
Transfer of program income	(20,074)	20,074	-
Net assets released from restrictions - satisfaction of program restrictions	556,206	(556,206)	-
<b>Total Public Support and Revenue</b>	<b>2,529,331</b>	<b>783,568</b>	<b>3,312,899</b>
<b>Expenses</b>			
Program Services			
Program - Homebuilding & Repair	1,468,093	-	1,468,093
Program - ReStore	386,223	-	386,223
Management and general	278,291	-	278,291
Fundraising	295,587	-	295,587
<b>Total Expenses</b>	<b>2,428,194</b>	<b>-</b>	<b>2,428,194</b>
<b>Change in Net Assets</b>	<b>101,137</b>	<b>783,568</b>	<b>884,705</b>
<b>Net Assets, Beginning of Year</b>	<b>1,601,459</b>	<b>954,624</b>	<b>2,556,083</b>
<b>Net Assets, End of Year</b>	<b>1,702,596</b>	<b>1,738,192</b>	<b>3,440,788</b>

## Statement of Cash Flow

### Fiscal Year Ending June 30, 2013

	<b>Consolidated FY2013</b>
Cash flows from operating activities:	
Change in net assets	\$ 884,705
Adjustments to reconcile change in net assets to net cash from operating activities:	
Depreciation	\$ 26,406
Loss on sale of assets	\$ 1,221
Mortgage loan discount amortization	\$ (90,855)
Impairment of inventory	\$ -
Pledges received	\$ (83,492)
Payments received on pledges	\$ 174,644
In-kind pledges received	\$ (62,070)
In-kind pledges fulfillment	\$ 105,322
Change in discount on pledges receivable	\$ (3,618)
Reduction of in-kind donations - bad debt	\$ 3,962
Changes in ReStore inventory for sale	\$ (14,578)
Equity in income of limited liability company	\$ (8,760)
Present value on Mortgages issued for home sales	\$ (220,155)
Cash from other operating activities:	
Accounts receivable	\$ (14,555)
Grants receivable	\$ (9,690)
Home building related inventory	\$ (605,235)
Pre-paids and other current assets	\$ 4,613
Accounts payable and accrued expenses	\$ 106,075
Deferred rent	\$ (2,447)
Deferred income	\$ (143)
<b>Net cash from operating activities</b>	<b>\$ 191,350</b>
Cash flows from investing activities:	
Purchase of property and equipment	\$ (918)
Principal repayments on mortgage receivables	\$ 186,957
<b>Net cash from investing activities</b>	<b>\$ 186,039</b>
Cash flows from financing activities:	
Payments on notes payable	\$ (239,472)
Proceeds from notes payable	\$ -
<b>Net cash from financing activities</b>	<b>\$ (239,472)</b>
<b>Net change in cash</b>	<b>\$ 137,917</b>
<b>Cash and cash equivalents, beginning of the year</b>	<b>\$ 333,149</b>
<b>Cash and cash equivalents, end of the year</b>	<b>\$ 471,066</b>



*Our work could not be done without  
our Partners...*

American Dream Builder



FORTUNE MARKETING UNLIMITED, INC.



BNY MELLON



TYNDALE HOUSE PUBLISHERS

Neighborhood Partners



## Homeownership Partners

valspar paint®

Thrivent®  
**Builds**  
with Habitat for Humanity®



Your Comfort. Your Experts.  
**Air-Rite**  
HEATING & COOLING

SEYFARTH  
SHAW

THE  
DU PAGE  
COMMUNITY  
FOUNDATION



J J  
J&J Motor Service

matrex exhibits

KFT&R  
KUBASIAK, FYLSTRA, THORPE & ROTUNNO, P.C.

SHOWALTER  
ROOFING  
SERVICE Inc. Proudly building quality  
roofs since 1979.

## Community Partners

usbank.

TRAVELERS 

Ball.

Regency  
Centers.

*Special Recognition goes to our Government Supporters:*

- ◆ DuPage Community Development Commission
- ◆ State of Illinois Tax Credit Sale
- ◆ US Department of Housing
- ◆ IL Department of Commerce & Economic Opportunity
- ◆ IL Housing Development Authority

*Our Donors*

**\$50,000 and above**

Ambitech Engineering Corporation  
Bank of America  
BNY Mellon  
Fortune Marketing Unlimited, Inc.

Habitat for Humanity International  
Schneider Electric - Power NA  
Tyndale House Publishers, Inc.

**\$10,000-\$49,000**

Airite  
Ball Horticultural Co.  
BMO Harris Bank  
BMO Harris Bank - Hinsdale  
CNH America LLC  
ComEd/Exelon  
DRF Trusted Property Solutions  
DuPage Community Foundation  
IK Dept. of Commerce & Economic Opp.  
J & J Motor Service  
Kubasiak, Fylstra, Thorpe & Rotunno, P.C.

Matrex Exhibits  
Painters USA, Inc.  
Planning Resources, Inc  
Regency Realty Group Inc  
Safway Services, LLC  
Showalter Roofing Service, Inc.  
Thrivent Builds  
Travelers Foundation  
Unilock  
US Bank Foundation  
Wells Fargo Foundation



**\$5,000-\$9,999**

American Concrete Institute  
Arnold J. Simonsen Foundation  
Capital One Services LLC  
Elkay Manufacturing Co  
Elmhurst Christian Reformed Church  
Federal Home Loan Bank of Chicago  
FedEx Ground  
First American Title

First United Methodist - Glen Ellyn  
Lowe's  
Paul Garrett  
Roy Strom Co.  
STA Group, LLC  
Symantec Corporation  
Transparent Container Company  
Whirlpool

**\$2,500-\$4,999**

John Carr  
Chicago Marriott SW at Burr Ridge  
DeVry  
Dupage Art League  
First Presbyterian Church of Wheaton  
Patricia Green  
Ford & Harrison, LLP  
Goldman, Sachs & Co.  
Holy Cross Lutheran Church of Wheaton  
Illinois Tool Works Foundation  
NECA-IBEW Local 701  
  
Newell Rubbermaid

Pete Papageorgakis  
Robert Bosch Tool Corp  
Ryan & Co Inc  
Safeway Services Inc  
Richard Sampson  
John Thacker  
Stephan Walsh  
West Suburban Bank  
Wheaton Bank & Trust Co  
Yale  
Zulu Nyala

**\$1,000-\$2,499**

Applegate & Thorne-Thomsen, P.C.  
AXA Variable Annuities  
Susan Bell  
Bluco Corporation  
Bower Elementary School  
CA Technologies  
Cablebusters Low Voltage Solutions  
Richard Dickson  
Richard Earley  
Ecolab  
Edmonds Inc.  
Al Ernst

Fellowes Corporation  
Mark Fessler  
First Presbyterian of Glen Ellyn  
Ford & Harrison LLP  
James Fortcamp  
Joanne Gomez  
James Green  
Dennis Harvey  
Havi Global Solutions  
I.D.E.A.S. Advertising, Inc.  
Junior League of Kane & DuPage  
Kaknes Landscaping Supply  
Michael Long  
Lyric Opera

## *Our Donors*

### **\$1,000-\$2,499-Continued**

Joseph Maniola  
Masonite Corporation  
Masters Transportation, Inc.  
Al McNeil  
MetLife Foundation  
Midwest Groundcovers, LLC  
Naperville Noon Lions  
Martin Nero  
Oakley Home Builders, Inc.  
Charlotte O'Connell  
Paramount Theatre  
Richard Petersen  
Peter Pignatiello  
PirTano Construcation Company  
Pamela Quednau  
Schwab Charitable Fund

Steven Schwager  
Robert Seidl  
Seyfarth Shaw Foundation  
Kathleen Short  
Southminster Presbyterian Church  
St. Michael's United Church of Christ  
St. Paul Evangelical Lutheran Church  
The Bjorkmann Foundation  
The Guzior Family Foundation  
Trinity Episcopal Church  
Trinity Lutheran Church  
Union Church of Hinsdale  
UPS  
Chris Wagner  
Jilian Walsh  
Terri Williams

### **\$500-\$999**

Adam Allan  
Alben F. & Clara G. Bates Found.  
BP America Inc.  
BP Fabric of America Fund  
John Brachle  
J. Bufton  
Michael Burd  
Stephen Caboor  
Codilis & Associates  
Computer Assoc. International  
Martin Dettmer  
Bob Diller  
Faith Evangelical Luth. Glen Ellyn  
Claudia Finley  
Franson-Olinger

Gogo  
Bill Hanson  
Krishnarao Hariprasad  
Gary Harris  
Illinois Brick Co.  
Lassandrello  
James Mann  
Mike Morrison  
Aldo Naris  
New Balance  
Oxford Bank & Trust  
Justin Pammer  
Howard Peterson  
William Pizer  
Ellen Ribe

**\$500-\$999-Continued**

Rosetta Capital Management  
Glenn Sapa  
Robert Scott  
Solid Impressions  
Keith Stidley  
Bill Terrien  
The RJN Foundation, Inc.

Thrivent Financial - South DuPage  
Transparent Container Co., Inc.  
Webb Family Charitable Fund  
Greg Weimer  
Wheaton North High School  
Jennifer Yosenick

**\$250-\$499**

Ihab Abuelenein  
Susan Altmann  
John Anderson  
Aubrey Sign Company  
Muneer Bachh  
Banner Personnel  
Gary Bartlett  
Mary Braatz  
Cassata & Associates LTD  
Theodore Craft  
Creative Business Authority, Inc.  
Dermatology /DuPage Medical  
Patricia Cronquist  
Jeffrey Ellis  
First United Methodist D.Grove  
Glenbard East High School  
Hinsdale Central High School  
Imagination Print & Design  
John Jarboe  
Jason's Deli  
C. Johnson  
Mattherw Johnson

Todd Kenning  
Kiwanis Club of Wheaton  
Mark Lamb  
LMA Interiors, LLC  
Stephen Magnani  
McDonald's Corporation  
Susan McLean  
David Miller  
Sharon Mueller  
My Chef Catering  
Ostrander Construction, Inc.  
Robert Palacios  
Pitney Bowes  
Thomas Plonka  
Phillip Raleigh  
Sharon Roeseler  
Robert Schmidt  
Donald Schoenheider  
Dale Showalter  
David Thompson  
Robert Vavra  
Chester Wiermanski  
Wirtz Beverage Illinois  
Your House Academy

## *Our Donors*

### \$100-\$249

Anthony Armalis  
Terrence Baehr  
Craig Baird  
Edwin Ballard  
Jeannine Baran  
Lawrance Barrett  
Ed Barrow  
Yvette Baxter-Drayton  
Kurt Bendewald  
Joseph Bernardo  
Frank Biniewicz  
Anne Brewer  
Vicki Broberg  
Jennifer Brunsting  
Harold Burgeson  
Karen Bychowski  
Kathleen Camp  
Jill Cankar  
Antonio Castillo  
Daniel Caudy  
Mary Clarke  
Ernest Codilis  
Jacqueline Colando  
Kena Contractor  
Rita Cooper  
Larry Costain  
Robert Cowsert  
Donald Cronauer  
Marc Cruz  
Robert Currer  
Margaret Ducci  
Timothy Dunneback

John Dvorak  
Edward Edwards  
Ronald Eichhorn  
Arthur Fedder  
Melissa Fee  
Judy Fox  
Eric Gaertner  
Ryan Gibbons  
James Gill  
Thomas Glennon  
Dean Gregory  
Patricia Habegger  
Mark Hall  
Iris Hannon  
Robert Hein  
Dawn Hershik  
Ann Hobel  
Russell Horn  
John Hrudicka  
Judy Huizinga  
David Hurst  
Gerald Hutter  
Lisa Jarmoszka  
Paul Jarosz  
Susan Johansen  
Scott Johnson  
Martha Johnston  
David Kennedy  
Chris Kerwin  
Ken Kramer  
Martha Kuhr  
Paul Kyrilis

Laura Ladewski  
Marialisa Latrofa  
Frank Ledone  
Paul LeFort  
Sarah Lensink  
Marsha Lenz  
John Leonard  
Frank Leone  
Warren Lexow  
Linda Lindaman  
Nancy Loda  
Julie Loos  
Tracy Lopez  
Cheryl Losik  
Helen Lotz  
Cathy Mackinnon  
Henri Manasse  
Kathryn Mauter  
Brian McCann  
Susan McCoy  
Larry McCoy  
Harry McPherson  
Ruth Metsch  
Steve Miller  
Mark Moran  
Joy Murphy  
Charles Nodus  
Richard Nogaj  
Jill Obmascik Gray  
Kevin O'Connell  
Jeanne Osgood

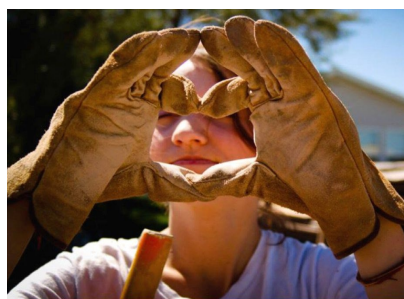
*Worldwide, Habitat is at work in over 100 countries.*

## \$100-\$249

Ripal Patel  
Brad Pekarek  
Gregory Pekarek  
Michael Pentz  
Tai Phan  
Leroy Pickett  
Marjorie Ploense  
Liz Powers  
Ann Reiland  
Susan Rheaume  
Sandra Ridker  
Leroy Rieck  
Stanley Robinson  
William Roper  
James Ryan  
Jeffrey Schamis  
Larry Schiff  
Rich Serenda  
Bryan Sibert  
Philip Slocum  
Duncan Smith  
Teresa Soria

Alicia Soria  
Julie Spotts  
John Stanaway  
Jenna Stelken  
Reynold Sterlin  
George Sutphen  
Christine Szala-Sena  
Crystal Szewczyk  
Sarah Tacker  
Karen Thompson  
Leon Thomsen  
Linda Valentine  
Donald Van Beek  
Barbara Vegter  
Anne Vekich  
Laura Vivas  
Janet Waichunas  
William Weiler  
Anne Wentz  
Kenneth Wojcik  
Judith Wood  
David Yi

Marie Zubinski  
Calvary Evangelical Lutheran  
Hurst Family Fund  
Pella Rolscreen Foundation  
Chicago Cubs  
Cantigny Golf  
Century Tile  
Delta Sonic Car Wash  
Zanies Comedy Nite Club  
The Westin Lombard  
Chicago Blackhawks  
Richardson & Edwards, Inc  
Carlucci  
Improv Comedy  
Precision Payroll of America,  
Glenbard South High School  
WDCB Public Radio  
Northwestern University  
St. Francis Xavier Church  
4imprint



*DuPage Habitat engages thousands of volunteers annually in its mission.*

## Our Donors

### \$50-\$99

Solomon Abrar  
Justin Allen  
Geoffrey Bender  
Susan Berger  
William Bleecker  
Linda Bodine  
Terry Briscoe  
John Buenger  
Kimberly Burnell  
John Carr  
Dan Carroll  
Tim Cheong  
Douglass Christoff  
Shannon Coan  
William Cole  
Robert Craig  
Rob Creaney  
Robert Cynowa  
Wendy Dahl  
Christina Darnell  
Carol Davidson  
Michael Egan  
Beverly Esser  
Mark Fankhanel  
Edward Fenton  
Michael Flickinger  
Michael Fornero  
Chris Foster  
Sally Garrison  
Douglas Gill

Vicki Greene  
Patrick Hahn  
Ted Hamilton  
Robert Haney  
Carol Hansen  
Brian Harte  
Ammar Hayani  
Lawrence Hayes  
John Hayner  
John Haynes  
Carl Henninger  
Meghan Higham  
Michael Hillenbrand  
Eloise Hirschey  
Virginia Hurst  
Tim Jahnke  
Alan James  
Susan Kaley  
Michael Kane  
Gregory Kane  
Donald Klenner  
Verner Klotz  
Tim Kluckman  
Clarence Kooy  
Anthony Kordyban  
James Kregor  
Thaddeus Kulinski  
Susan Lark  
Frederick Lauerman  
Anthony Lenard

Janis Licari  
Phil Licina  
John Manderscheid  
Juan Mariani  
Sheryl Markay  
Tipton McCawley  
Michael McMahon  
Mark Meyer  
James Mixon  
Gary Morel  
Justin Nolan  
Theresa Nygren  
Agnes O'Bryan  
George Peck  
Eugene Piette  
Maryann Polivka  
Eugene Poulin  
Eric Rose  
Mark Rosenblatt  
Franklyn Schellinger  
Jeanne Schimeck  
John Schneider  
Robert Schroeder  
Laura Smith  
Mary Ann Sommers  
Pardeep Sood  
John Spina  
Joe Strunewitz  
James Stump  
John Tatar

Elmore Taylor  
Tim Troy  
Beverly Ure  
Steven Vogel  
Benjamin Wagner  
Raymond Ward  
Kelli Wheeler  
Mark Whittington  
John Wilson  
Darlene Witt  
David Wlodarczyk  
Glenbard East Key Club  
Alliant Credit Union Foundation  
GlaxoSmithKline Foundation  
Shiffler Builders Inc  
BP Foundation, Inc.  
Dominick's Finer Foods  
UL  
JPMorgan Chase Foundation  
Brunswick Zone Woodridge  
Museum of Science and Industry  
Lynfred Winery  
Donald F. Doyle D.D.S., P.C.  
McMaster-Carr Supply Company  
Phoenix Closures  
Rosebud Restaurants  
St. Paul's United Church of Christ  
Enchanted Castle  
The Second City

### \$50 and under

Solomon Abrar  
Jennifer Ackerman  
Dipesh Agarwal  
Justin Allen  
Lisa Alley  
Alexander Allison  
Brian Baldwin

Helen Bartlett  
Susan Berger  
Diane Bergschneider  
Rachael Berthiaume  
Cynthia Boggs  
Paul Brachle  
Paula Brkich  
John Buenger

Paul Burgess  
Oliver Burrows  
Stephen Butala  
Carlos Calderon  
Bobby Calderon  
Rita Carlen  
Kenneth Carlson  
Linda Carlsson

John Carr  
Roger Cheairs  
Tim Cheong  
Douglass Christoff  
Barbara Coop  
Robert Craig  
Rob Creaney  
Robert Cynowa

## **\$50 and under continued**

Wendy Dahl	Dave Ivey	Patti Mirsberger	Paul Tuma
Candy Dominy	Tim Jahnke	Sharon Mitchell	Thomas Tyson
Steven Domzalski	Anthony Janacek	James Mixon	Beverly Ure
Patrick Dowdle	Dorothy Johnson	Patricia Modrowski	William Van Hoegarden
Beverly Esser	Juliana Judd	Gary Morel	Subramanian Venkitachalam
Kembala Evans	Joseph Kadolph	Ute Murrin	Sam Vitale
Mark Fankhanel	Susan Kaley	Scott Nelson	Steven Vogel
Michael Flickinger	Michael Kane	Justin Nolan	Mary Wagner
Michael Flood	Kyle Kays	Theresa Nygren	Benjamin Wagner
Diane Forney	Donald Klenner	Paul Papciak	Nancy Walsh
Chris Foster	Verner Klotz	Bill Pearson	Marlene Walshon
William Fraser	Tim Kluckman	Mark Pearson	Judy Walters
Deborah Freeman	Cynthia Kocher	George Peck	George Wamsley
Veena Gandhi	Elaine Kolman	Philip Peduzzi	Raymond Ward
Sally Garrison	Clarence Kooy	Gary Peterson	Leslie Watkins
Toni Garza	Mark Korres	Patricia Philipps	Donna Webster
Stanley Gershenson	Dale Kosman	Eugene Piette	Scott Wentzel
Douglas Gill	Roger Kotecki	Maryann Polivka	Florence Wentworth
Vicki Greene	James Kregor	Eugene Poulin	Lionel Whiston
Paul Greening	Patricia Krug	Shannon Rastetter	Mark Whittington
Linda Grothendick	Leonard Krystal	William Reibel	Richard Willix
Patrick Hahn	Thaddeus Kulinski	Eric Rose	Renardo Wilson
Ted Hamilton	Charles Kurt	Mark Rosenblatt	John Wilson
Beverly Hammerschmidt	Mary Kurt	Carol Russell	Darlene Witt
Mary Jo Hannon	Jennifer Kurt	Donald Russell	David Wlodarczyk
Carol Hansen	Justin Kwak	Franklyn Schellinger	Piccadilly Circus
Robert Harcourt	Annie Lam	Jeanne Schimeck	Build-A-Bear
Ellen Hardy	Susan Lark	Stephen Schneider	Hooters
Paul Harris	Hon Lau	Jeffrey Sherry	IL Real Estate Academy
Thomas Hart	John Lemire	Lynda Snapp	Pitney Bowes
Brian Harte	Anthony Lenard	Mary Ann Sommers	Marconi's Ristorante
Ammar Hayani	Steven Lesniak	Pardeep Sood	Center For History
Lawrence Hayes	Janis Licari	John Spina	Peggy Notebaert Museum
John Hayner	Phil Licina	Robin Staples	United Way of Metro Chicago
John Haynes	Carl Lind	Stanley Steed	A Trip to the Movies
Rena Hect	Ronald Linker	Melissa Stephens	Chicago Wolves Hockey
Duane Hendricks	Kenneth Long	Richard Stern	Zigfield Troy Golf Range
Carl Henninger	Juan Mariani	Eric Stone	Glenbard East Key Club
Daniel Hildebrandt	Sheryl Markay	James Stump	Alliant Credit Union Foundation
Robert Hill	Thomas Marszowski	Elmore Taylor	GlaxoSmithKline Foundation
Lois Hockman	Lauren Mayor	Tracie Thomas	Shiffler Builders Inc
Judi Hoehler	Tipton McCawley	Earl Thompson	BP Foundation, Inc.
Duane Huber	Michael McMahan	Ming Ming Tong	Dominick's Finer Foods
Robert Hupp	Robert Menster	Dominic Tosto	
Virginia Hurst	Mark Meyer	Tim Troy	



DuPage  
**Habitat**  
for Humanity®

**Main Office**

1600 E. Roosevelt Rd.  
Wheaton, IL 60187  
Phone: 630-510-3737  
[www.dupagehabitat.org](http://www.dupagehabitat.org)

**DuPage Habitat Restore:**

869 S. Rohlwing Rd.  
(Route 53)-  
Addison, IL 60101  
630-517-2080  
[www.dupagerestore.com](http://www.dupagerestore.com)

